



S K Y L I F E

B D F A S H I O N

BUILDING TRUST BUILDING SUCCESS



Company Profile

Rhythm Of Fashion & Aristocracy

Contact Details

Name Of The Company : SKY LIFE BD FASHION
Year Of The Establishment : 2010
Nature Of The Business : 100% Export Oriented Garments Buying & Selling
Contact Persons : Mr. Rahim (Managing Director).
Mr. Sayed Zahirul Quauime (Chairman)



Corporate Office Address
Location : House # 238, (Ground Floor), Road # 3,
Baridhara DOHS, Dhaka-1216, Bangladesh.
Mobile : +8801672904189, +8801832629001
E-mail : info@skylifebd.com
Web : www.skylifebd.com

Banking Partner

ACCOUNT NAME : Sky Life BD Fashion Ltd.
Account No : CAD923935322
Swift No : HVBKBDHXXX
Bank Name : WOORI BANK.
Bank Address : SUVASTU IMAM SQUARE. 65 GULSHAN
AVENUE DHAKA-1212, BANGLADESH.





SKY LIFE BD FASHION is a well-established reputed Garments buying house in Dhaka, Bangladesh. We have an experienced and hardworking sales, procurement & quality control team, which can provide you with a complete service supplying quality garments at competitive prices. **SKY LIFE BD FASHION** marketing and merchandising department. All of our executives are experienced and knowledgeable and can serve you on each of your requirements. Limited - Management have strong integrity and accountability with professional well experience in this trade locally and globally with good reputation .

The sum of our team is an efficient official for you to start with. Each customer's account is served and handled by an individual executive that is why our service is prompt for all the orders and enquiries simultaneously. We care for the new customer same that we do for our major customers, this is also one of the main ethics of our marketing and merchandising department. All of our executives are experienced and knowledgeable and can serve you on each of your requirements. The company is a Buying and Sourcing agency from Bangladesh offers its international buyers, the ultimate solution for sourcing excellent quality Garments, Apparel Accessories from Bangladesh and Internationally, and our valued expertise and experience in sourcing and technical fields have helped us gain an in-depth understanding of Garments, Apparels and Fashion Accessories. The company specializes in areas of competitive price, product development, production & timely deliveries, online & post production inspections, coordination & communication.

ABOUT US





OUR MISSION VISION & VALUES

Mission

Our unique vision , mission and values capture the essence of who we are and how we interact with one another. In addition, it speaks to how we go to market and our commitment to delivering excellence to our customer.

Vision

To be the most trusted and respected professional services firm recognized by our clients for delivering excellence.

Values

Integrity – We do the right thing regardless of the consequence.

Pursuit of Excellence : We continually strive to exceed the expectations of our people and our customer

Accountability : We take responsibility for individual and collective actions.

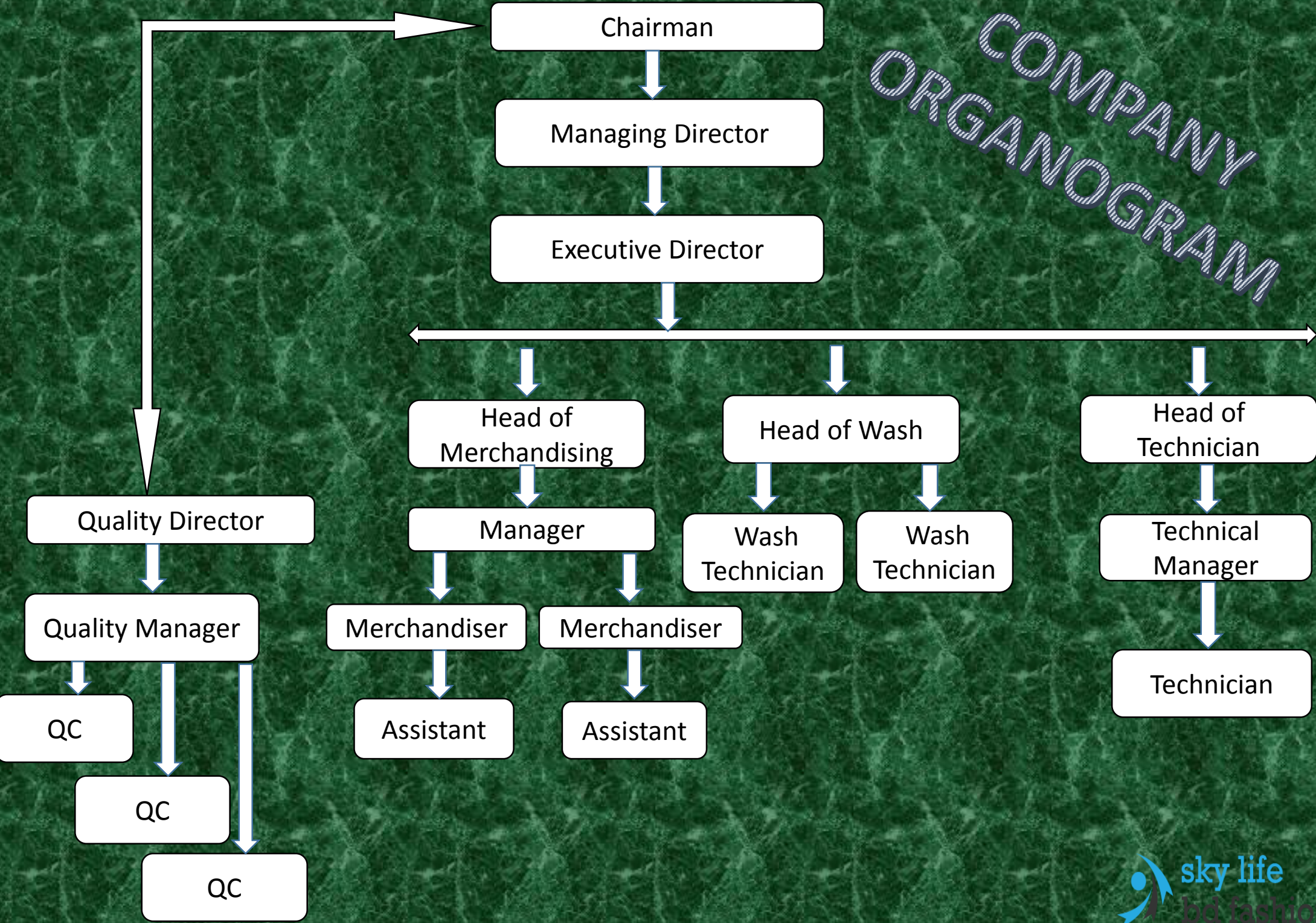
Collaboration : we work together to achieve and individual goals.

Passion : Our energy and enthusiasm contagious. We are inspired to make a lasting impact.



HOW WE WORK

COMPANY ORGANOGRAM



OUR CAPABILITIES

We source right vendors for the product



We confirm the best price to the competitive market



We develop sample at our own sample studio



Our quality team assure to deliver the quality products

Our product design and development team is always proactive



**WE WOULD
LIKE TO
OFFER**

- ✓ Value Added Product Sourcing.
- ✓ Integrated Supply Chain
- ✓ Mutually Beneficial Fair Business Trade
- ✓ Result Oriented Team
- ✓ Required And Acceptable Quality Product.
- ✓ Unbeatable Price For Fashion Trend.
- ✓ Timely Delivery Of The Product.
- ✓ Sourcing Knowledge.

A. Selection of right fabrics and accessories sources at Competitive price.

B. Selection of right garment manufacturing plants.

C. Capacity management system.

- product knowledge.

- a young professional merchandising team under direct Supervision of the management.

- skilled quality assurance team.

- well aware of chemical and physical restrictions.

- regular update on market information and competitor activities.

- standard working atmosphere in a convenient location, with good Infrastructure.

CORE VALUES

Our Customer: We put our customers at the forefront recognizing & respecting their values; with a view to always meet their requirements and making their sourcing a valuable one.

Personnel: We commit ourselves to ensure that our people grow within the business. We believe in their loyalty, team spirit and legitimate aspirations for always being successful.

Excellence: We compete on quality, service and value. We build our competitive edge on superior innovation and customer responsiveness. We have a passion for excellence and our intention is to simply be the best.

Responsibility: We recognize and always honor the investment of our customers, as well as our ethical and social responsibilities. We respect our environment and its protection. We compete on quality, service and value. We build our competitive edge on superior innovation and customer responsiveness.

Competitive Prices: R.M.J Design Limited is able to offer world class service at a very competitive price. R.M.J have experts in other supply countries to follow their exclusive costing structure to precision. This helps to negotiate better prices from all vendors to suit the customer needs and desire.

Leadership: We demonstrate decisive leadership and fast management reaction to secure maximum advantages of changes.

OUR SERVICES

Supplier Credibility: R.M.J Design Limited developing team take great care to ensure the quality, desired weight, construction and color, we evaluate the capacity and capability of every factory. R.M.J Design Limited also check environmental control, safety laws, labor practices and adherence to labor laws. We make sure that our supplier can meet our requirements when it comes to reaching the average number of pieces produced as per buyer's requirement at a given period of time to meet schedule.

Sourcing: R.M.J Design Limited maintains strong exclusive relationships with many of the yarn and fabric mills and the accessories suppliers. Upon placement of orders, we check right way and control the quality of all garment inputs such as yarn, fabric, accessories, labeling and coordinates timing of their procurement and its timely delivery. We let buyers choose and decide what kind of accessories and labels to use as far as style, color, design etc.

Sampling: We develop and provide samples as per buyers design, fabric quality, weight, shrinkage, color fastness, specifications etc. to obtain buyers approval before heading to production through our professional staff of Merchandisers and Quality Controllers who always keep a close check on sampling and production.

Quality Control / Assurance : Our Quality Controllers visit the factory regularly to make sure we meet our buyer's requirements. Our quality control personnel are stationed at all manufacturing sites to ensure that all production will meet according to buyer's requirement. We always want to deliver satisfaction to our customers; we monitor the order from sourcing of raw materials and accessories to production and up to the final shipment of goods. We also monitor and report the status of the order to the buyer with systematic follow up on each and every stage.

Packaging: Only approved goods are packed and buyer is assured of getting quality merchandise. Care is also taken to see whether all packing instructions of the buyer are respected.

Shipment/Cargo Handling: All shipping documents are reviewed and verified as per buyer instruction. All cargo is handled by reputable forwarder to obtain correct information regarding ETD and ETA of vessels because time delivery is as important for us as it is to the buyer



Social / Environmental / Technical Compliance, Merchandising

Social & Environmental Compliance :

- Implement Group social and environmental compliance programmers
- Responsible for the on going development and coordination of a comprehensive social compliance programme
- Monitor programme and adherence according to the company's code of conduct and local regulatory requirements
- Communicate with Government non-governmental organizations and other external parties
- Develop training programs for internal staff and external vendors with the goal of promoting a healthy compliance culture across the company's complete supply chain
- Conducting factory compliance audits, investigation of work incidents and providing innovative recommendations for sustainable solutions

Sourcing, Product Development and Merchandising :

- Product development based on customer's choice and requirement.
- Ensure and build up good relationship with existing and new suppliers.
- Source and develop new supplier based on product nature and requirements.
- Supplier allocation based on Product design and performance requirements, Country that is specialist in the products, Supplier performance, Lead-times for development and production, Capacities available, Social & Technical compliance.
- Create critical path and ensure adherence for all developments in terms of clients orders and new product development.
- Research and establish potential suppliers for new products
- Ensure pricing is negotiated to be the best suit for the company.
- Order prototype, photo and salesman samples, ensure quality and delivery correct with support of the production and quality team.
- Check and comment on samples (Proto, Sealing, Size Set, PP (Pre-Production) samples in terms of measurements, workmanship, style and fit in a written form to confirm before start of production in collaboration with customer and local team.
- Ensure that the suppliers have technical capability to produce garments to the company standards.

Supply Chain: Planning

- Reserve capacities with supplier's based on forecasts from the Business Units in collaboration with merchandising team
- Monitor capacity utilization to ensure no overloading at any supplier
- Purchase order placement – CSD (confirmed shipment date) are inline with agreed dates
- Negotiate any deviations to optimum delivery
- Handover all confirmed orders to Production Manager for delivery follow-up **Supply**

Supply Chain: Production and Quality Assurance

- Responsible from order confirmation to final inspection of product, ensuring production plans are achieved
- Deviations to be highlighted to the Business Units accordingly
- Creating product files that allow QC to conduct final inspections at the supplier
- To schedule the QC's to factories to conduct final inspection before the agreed CSD
- Conducting in house lab tests and color control for all orders

PLANNING PRODUCTION & QUALITY ASSURANCE, LOGISTICS & SHIPMENTS

Supply Chain: Logistics and Shipments

- To ensure Business Units are fully aware of the status of their orders as follows:-

Early shipment, On time shipment, Late shipment

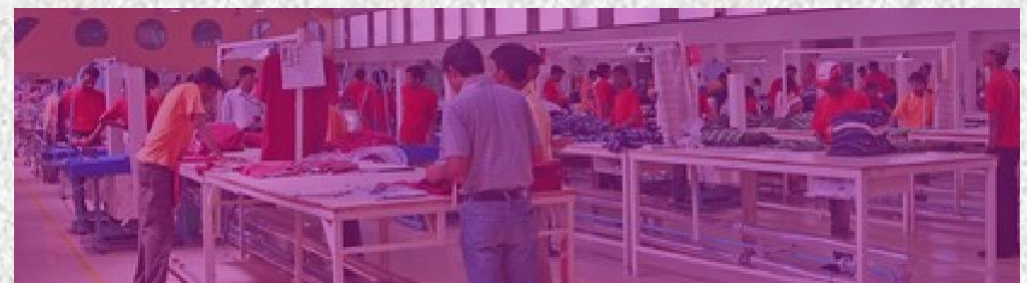
Out of tolerance + or – Quantity

Mode of shipment – Sea or Air

Receive any changes to confirmed orders, implement with supplier and provide feedback to the Business Units accordingly.

- Receive, check and dispatch on a timely basis all shipment documents from the suppliers
- Working with freight forwarders to ensure logistics are without problems

- Weekly regional production status recap and monitoring
- Conduct factory assessments based on minimum requirements for supplier. Agree action plans for improvement.
- Implement company's Quality standards and define AQL inspection methods.
- Final AQL inspection orders to determine based on military standard AQL



OUR PRODUCTS (POLO SHIRT)



POLO SHIRT WITH CUT & SEW



**POLO SHIRT WITH TIPPING
COLLAR & CUFF**



**POLO SHIRT WITH SOLID
COLOR**



POLO SHIRT WITH CUT & SEW



**POLO SHIRT WITH
CUT & SEW**



POLO SHIRT WITH SOLID COLOR

OUR PRODUCTS (T-SHIRTS)



T-SHIRT COOL DYEING



T-SHIRT WITH OIL WASH



T-SHIRT WITH CUT & SEW



T-SHIRT WITH PLACKET



T-SHIRT WITH DEEP DYE



T-SHIRT WITH CHEST PRINT



T-SHIRT COOL DYEING



T-SHIRT WITH AOP

OUR PRODUCTS (DENIM PANT)



LADIES DENIM PANT WITH DESTROY



LADIES DENIM PANT WITH DESTROY



MENS DENIM LONG PANT WITH P.P & WHISKER



MENS DENIM LONG PANT WITH CRINKLE



MENS DENIM LONG PANT WITH DARK WASH



MENS DENIM LONG PANT WITH DARK WASH



LADIES DENIM TIGHT FIT



MENS DENIM REGULAR FIT

OUR PRODUCTS (DENIM JACKET)



LADIES DENIM JACKET



**MENS DENIM JACKET
WITH BLEECHE WASH**



**LADIES DENIM JACKET
WITH RAW COLOR**



**LADIES DENIM JACKET
WITH KNITTED HOOD**



**DENIM JACKET WITH
SHERPA**



**LADIES JACKET WITH
SHERPA**



**DENIM JACKET WITH HEAVY
FABRIC**



**LADIES DENIM JACKET
WITH DARK COLOR**

OUR PRODUCTS (TWILL & CARGO)



MENS TWILL LONG PANT



MENS TWILL LONG PANT



MENS CASUAL PANT



MENS CAMO PRINT CARGO PANT



MENS CARGO LONG PANT



MENS CARGO SHORT PANT



MENS CARGO SHORT PANT



MENS CARGO SHORT PANT

OUR PRODUCTS (HOODY JACKET)



**MENS YARN DYED
HEAVY WASHED HOODY**



**FLEECE HOODY WITH
FULL ZIP**



**FLEECE HOODY WITH
KANGAROO POCKET**



**HOODY JACKET WITH
HEAVY SINGLE JERSEY**



**FLEECE HOODY WITH
FULL ZIP**



**FLEECE HOODY WITH
FULL ZIP**



**FLEECE HOODY
WITH FULL ZIP**



**FLEECE HOODY
WITH FULL ZIP**

OUR PRODUCTS (ACTIVE WEAR)



MENS FLEECE TROUSERS



MENS TROUSERS



MENS JOGGING WEAR



MENS SWIM SHORTS MICRO PEACH



MENS SWIM SHORTS MICRO PEACH



LADIES JOGGING WAER



LADIES JOGGING WEAR



MENS SWIM SHORTS MICRO PEACH